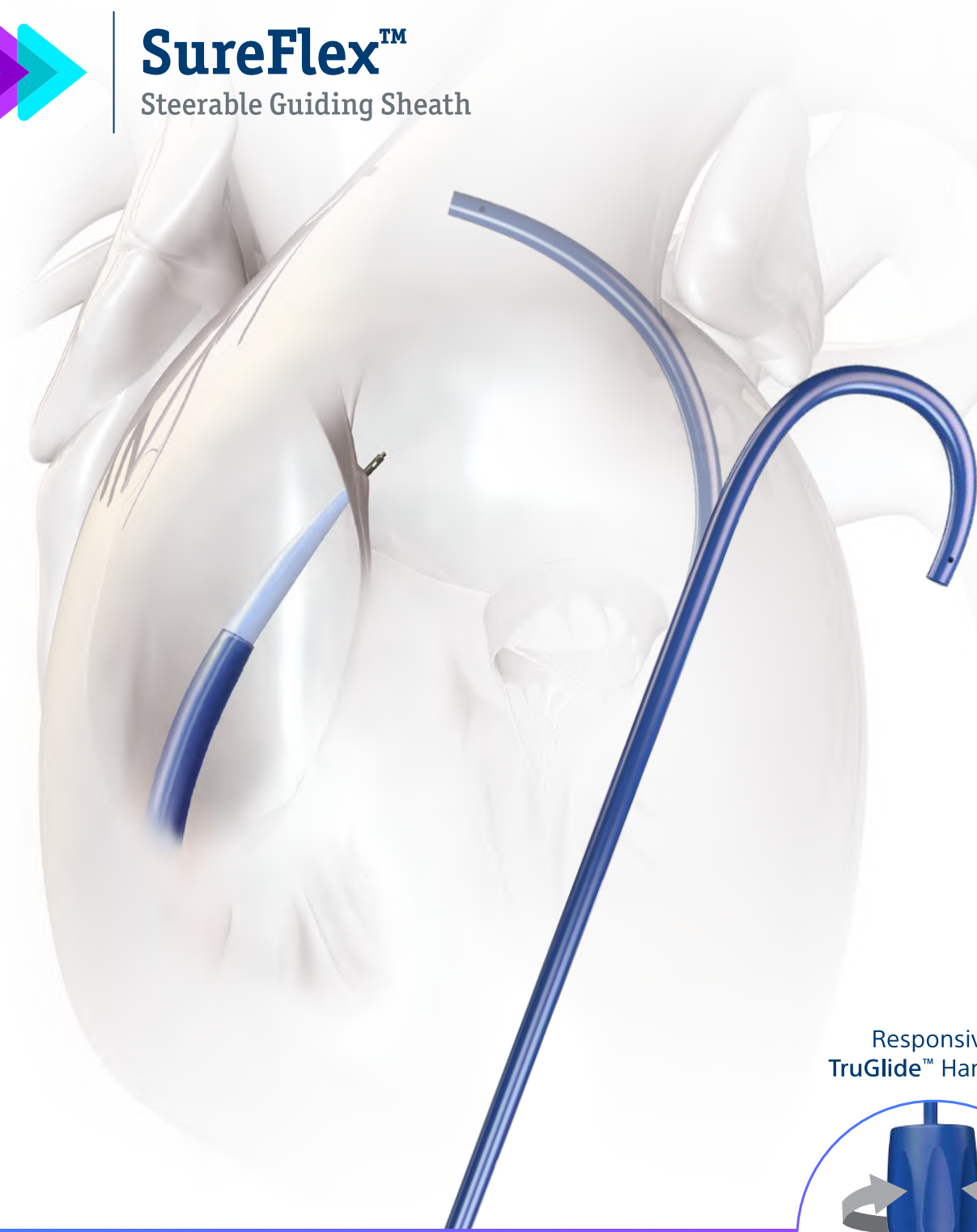




SureFlex™
Steerable Guiding Sheath



Responsive
TruGlide™ Handling



FEEL CONTROL. SEE RESULTS.™

FEEL CONTROL. SEE RESULTS.™

The SureFlex™ Steerable Sheath has been engineered to provide maximum control throughout your entire procedure.

Schedule a case with one of our clinical specialists to experience the control for yourself.



Reliable and consistent hub-snap mechanism



Controlled Crossing⁺

The advanced sheath-dilator design enables smooth and consistent access, providing you with a more predictable crossing experience.*



Precise Steering⁺

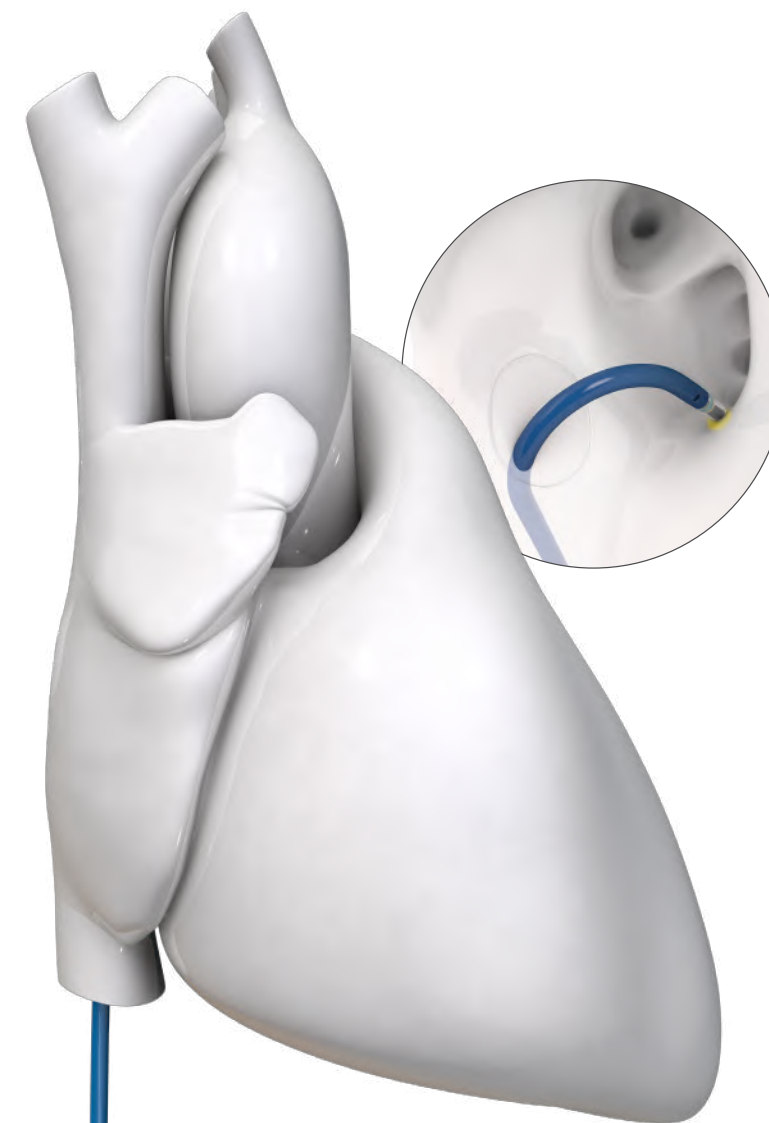
Feel your curve, know your position. Achieve maximum precision and control* with TruGlide™ Handling and intuitive tactile feedback.



Reliable Performance[§]

Engineered to support consistent contact of cardiovascular catheters, while providing premium strength and durability.*

DELIVER



Consistent Contact Force[§]

Support the consistent contact force of catheters.^{1*} Consistent contact force of ablation catheters provides better therapeutic results.²

Strength and Durability[§]

High performance; greater durability than the leading competitor.*

Engineered to retain your curve throughout the procedure.



Self-locking Dial

Maintain your position - deliver therapy on target as the dial retains your curve.

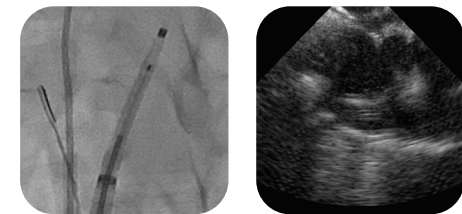
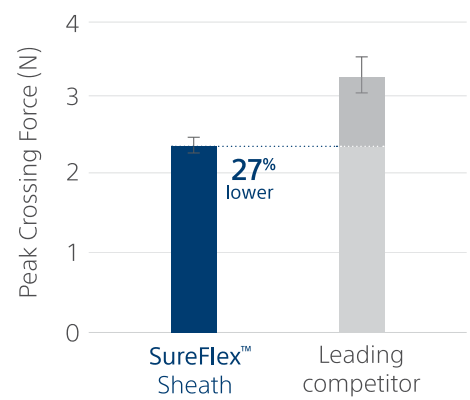
EVERY TIME.

CROSS

Confidence in Crossing[†]

Gain access with confidence:

- A 27% lower peak crossing force, with a smoother profile.*



Radiopaque Tips

Control your position by visualizing sheath and dilator tip locations during the procedure.



Smooth Transition[†]

A 40% smoother dilator-to-sheath transition than the leading competitor,* to facilitate a smoother crossing.

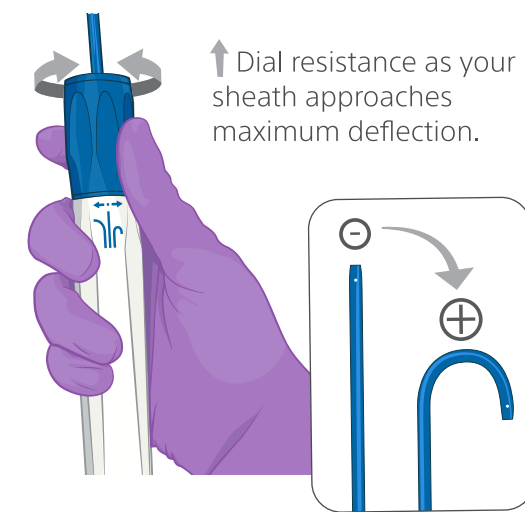
TARGET

Responsive TruGlide™ Handling

Smooth, high-precision steering to confidently position your curve.

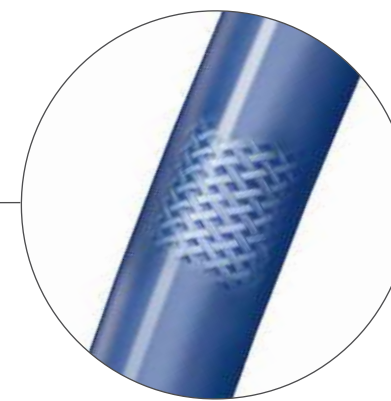
Tactile Feedback

Feel the extent of your curve deflection with intuitive tactile feedback.



Controlled Torque[†]

Position yourself accurately with a 1:1 torque response,* enabled by a composite braid design.



DELIVER

Consistent Contact Force[§]

Support the consistent contact force of catheters.^{1†} Consistent contact force of ablation catheters provides better therapeutic results.²

Strength and Durability[§]

High performance; greater durability than the leading competitor.*

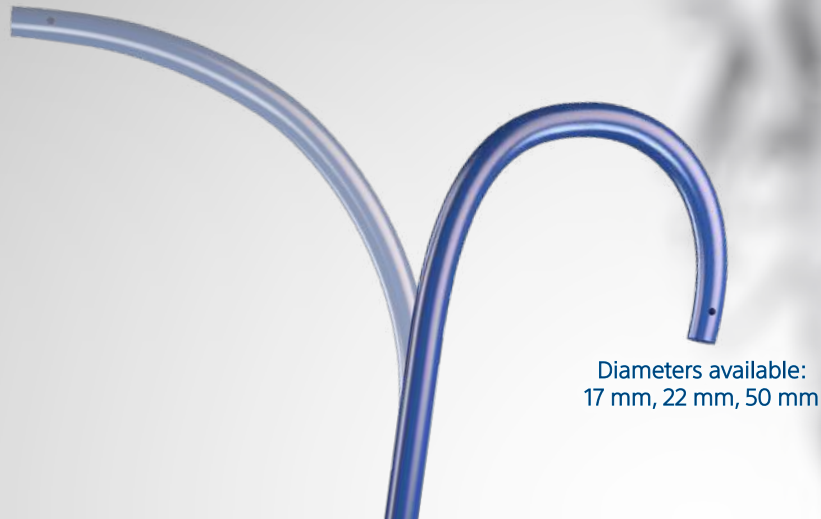
Engineered to retain your curve throughout the procedure.



Self-locking Dial

Maintain your position - deliver therapy on target as the dial retains your curve.

SureFlex™ Steerable Guiding Sheath



SPECIFICATIONS

Feature	Specification
French size compatibility	8.5F (2.8 mm)
Sheath usable length	72 cm
Sheath overall length	92 cm
Sheath radiopaque marker	Platinum/iridium band
Dilator usable length	95 cm
Guidewire length	180 cm
Compatible guidewire	0.032" (0.81 mm)
Bidirectional curve angles	90° CCW, 180° CW

ORDERING INFORMATION

Product Number	Distal Curve Diameter
TSK3001	Small (17 mm)
TSK3003	Medium (22 mm)
TSK3005	Large (50 mm)

*Bench testing or pre-clinical study results may not necessarily be indicative of clinical performance. The testing was performed by or on behalf of Boston Scientific. Data on file.

†Assessed by laser micrometry measurements along the length of the sheath-dilator transition ($p < 0.001$, 5 SureFlex™ compared to 5 competitor sheaths) and by force gauge measurements during simulated transeptal crossing ($p < 0.001$, 10 SureFlex™ compared to 8 competitor sheaths).

‡Assessed by handle rotation to a full 360° to test axial torque transfer and the maximum rotational capabilities of each sheath (5 SureFlex™ compared to 3 competitor sheaths).

§Assessed by full bidirectional articulation to maximal extension up to 10 times to achieve mechanical fatigue ($p = 0.007$, 5 SureFlex™ compared to 3 competitor sheaths) and by repeated unidirectional articulation until failure or up to 300 cycles (5 SureFlex™ compared to 6 competitor sheaths).

¹Brunelli M, et al. *Europace*. doi: 10.1093/europace/eur333

²Piorkowski C, et al. *Circ Arrhythm Electrophysiol*. doi: 10.1161/CIRCEP.110.957761

All trademarks are property of their respective owners. Patents Pending and/or issued. Caution: The law restricts this device to sale by or on the order of a physician. Indications, Contraindications, Warnings, and Instructions For Use can be found in the product labelling supplied with each device or at www.baylismedical.com.

Products shown for INFORMATION purposes only and may not be approved or for sale in certain countries.
This material not intended for use in France.



**Boston
Scientific**
Advancing science for life™

© 2023 Boston Scientific Corporation
or its affiliates. All rights reserved.
EP-1568706-AA